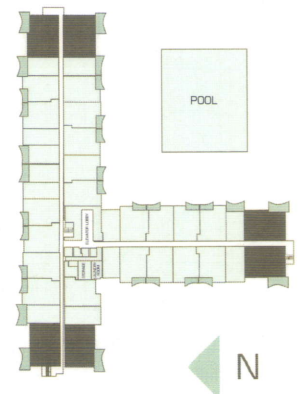
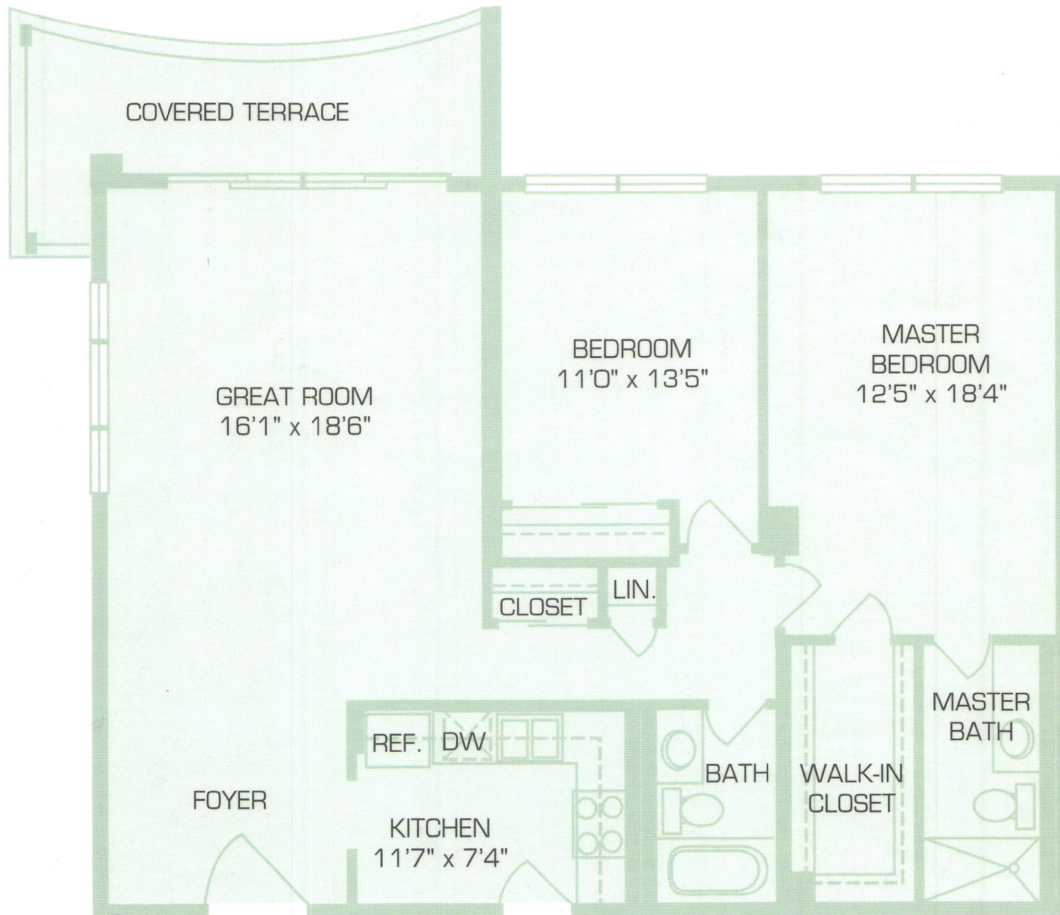




**ST. CROIX**  
Two Bedrooms, Two Baths

1270 to 1274 SF living area  
(117.99 to 118.36 M)



Preliminary floor plan for preview purposes only. Dimensions and plans shown are approximate and subject to change. See sales representative for details. Developer reserves the right to alter and improve without notice. Oral representation cannot be relied upon as correctly stating representation of the developer. For correct representation make reference to the purchase agreement and to the documents required by section 718.503 Florida Statutes to be furnished by developer to buyer or lessee. Not an offer where prohibited by State statutes. We are pledged to the letter and spirit of the U.S. policy for the achievement of equal housing opportunity throughout the nation. We encourage and support an affirmative advertising and marketing program in which there are no barriers to obtaining housing because of race, color, religion, sex, handicap, familial status or national origin. Equal Housing Opportunity.